



Bulk Solid Handling & Processing Technology

Represented by:

Mayer & Oswald, Inc.

1516 Commerce Drive.

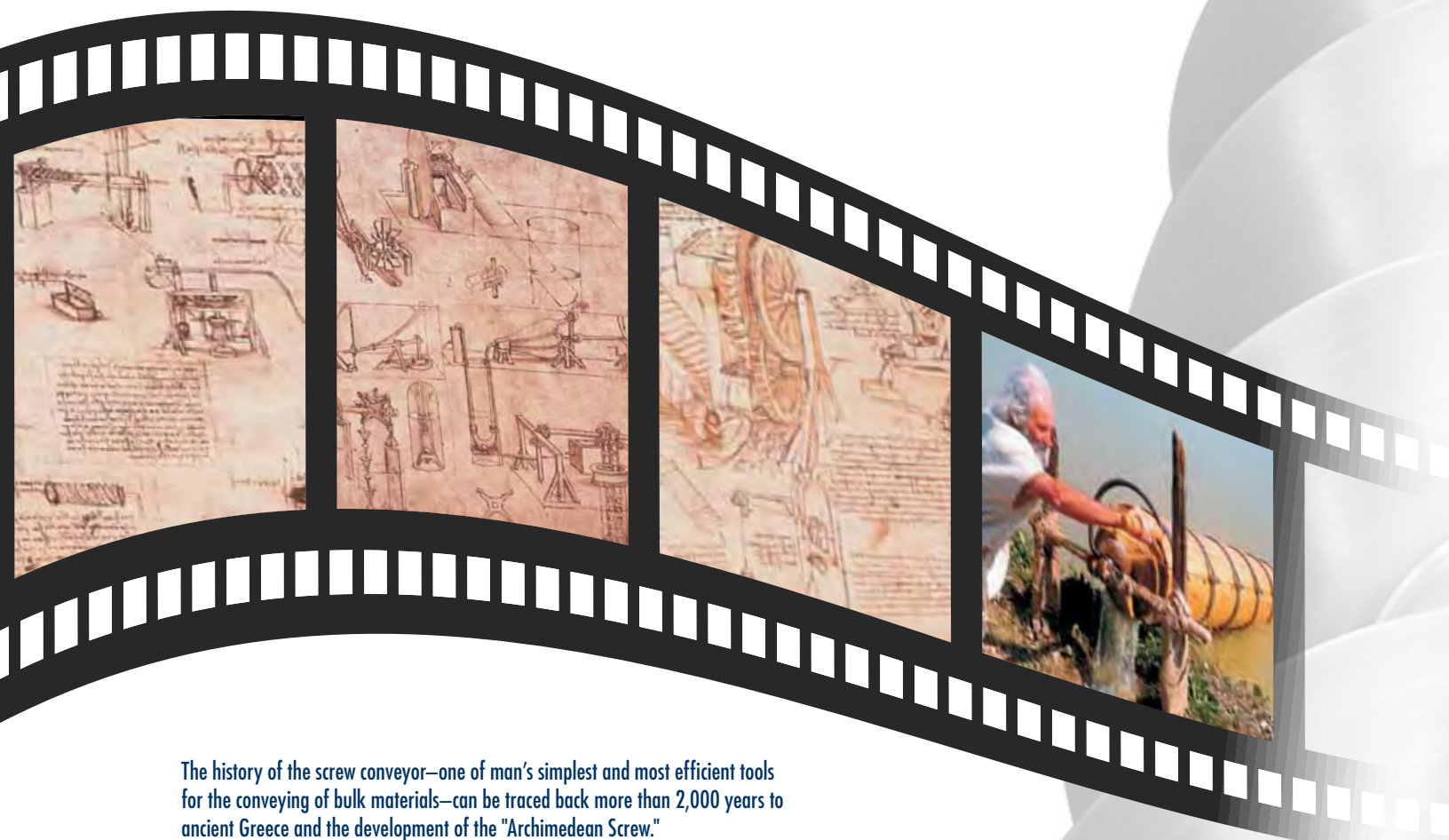
Elgin, IL 60123

Ph: 800-869-8042

Fx: 847-697-0700

Sales@mayerandoswald.com

www.mayerandoswald.com



The history of the screw conveyor—one of man's simplest and most efficient tools for the conveying of bulk materials—can be traced back more than 2,000 years to ancient Greece and the development of the "Archimedean Screw."

About 240 b.c., Archimedes, a renowned Greek mathematician and inventor, perfected a spiraled tubular device for removing water from the hold of a large ship. In doing so, he became the first man to put the screw conveyor principle into practical application.

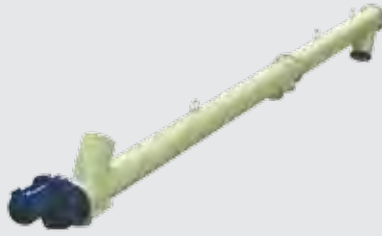
Today the screw conveyor plays an important role in a wide variety of industries. Because it is compact, versatile and economical, it has become one of the most useful mechanisms for the transport and distribution of bulk materials.

Aside from its utility as a means of moving materials, the screw conveyor, with certain modifications and/or variations in mechanical arrangement, may also be used to perform, a number of other important functions. It can be used to mix, blend or agitate. In applications where close control of material flow is critical, the screw conveyor may be used as a highly accurate metering device.

Operating in a jacketed housing it may be used as a heating or cooling device. Because it can be effectively sealed, it is extremely valuable in applications where dust or fumes must be confined inside the conveyor or where moisture or contaminants must be kept out. Since the company was first established, WAM® Inc., has specialized in the design and manufacture of screw conveyor equipment and has built its reputation in this field.

No matter what your requirements, you may be assured that WAM® Inc., is always a dependable source for quality and reliability in screw conveyor equipment and related components.

Tubular Screw Conveyors



6 inch to 24 inch diameter

Vertical Screw Conveyors



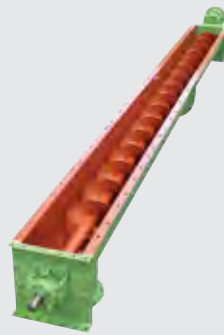
6 inch to 24 inch diameter

Shaftless Vertical Spiral Conveyors



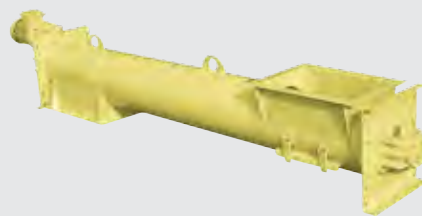
$Q_{max} = 26.5 \text{ cfm}$ $H \leq 40 \text{ ft}$

Trough Screw Conveyors



6 inch to 24 inch diameter

Tubular Trough Screw Conveyors



6 inch to 24 inch diameter

Shaftless Spiral Conveyors



6 inch to 24 inch diameter

Stainless Steel Trough
Screw Conveyors



6 inch to 24 inch diameter

Stainless Steel Shaftless
Spiral Conveyors



6 inch to 24 inch diameter

Stainless Steel Tubular
Screw Conveyors



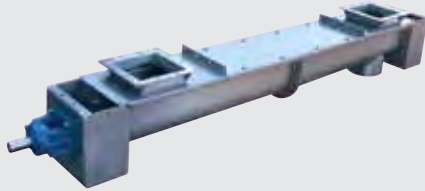
6 inch to 24 inch diameter

Stainless Steel Vertical Screw Conveyors



6 inch to 24 inch diameter

High-Temperature Screw Conveyors



MT = 250 ≤ 360°F HT = 356 ≤ 932°F

Flighting & Conveyor Screws



SINT MC1 = flexible SINT ER = abrasion-resistant SINT AL = food-grade (FDA-approved)

Bucket Elevators



SINT Slide Valves



□_{nom.} = 6" ~ 16" ∅_{nom.} = 6" ~ 16" □_{nom.} = 12"

Single Shaft Screw Feeders



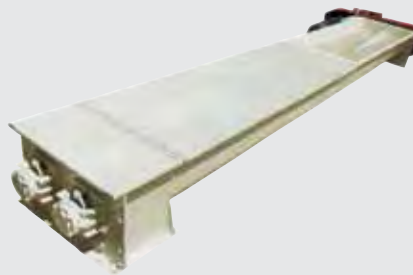
6 inch to 24 inch diameter

Tapered Single Shaft Screw Feeders



6 inch to 24 inch diameter

Tapered Twin Shaft Screw Feeders



6 inch to 24 inch diameter

Live Bin Bottoms



6 inch to 24 inch diameter

Screw Screens



$Q = 63 \sim 635 \text{ cfm}$

Screw Compactors



$Q_{\text{max.}} = 4.7 \text{ cfm}$

Grit Separators



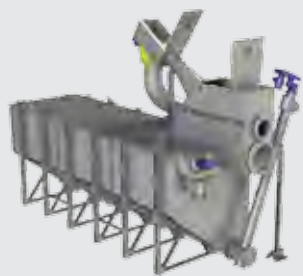
$Q_{\text{max.}} = 76 \text{ cfm}$

Septic Tank Reception & Emptying Plants



$Q = 32 \sim 64 \text{ cfm}$

Combined Mechanical Effluent Pre-Treatment Plants



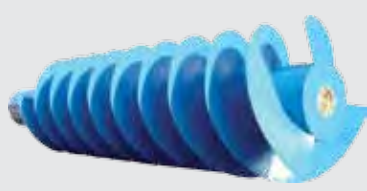
$Q_{\text{max.}} = 320 \text{ cfm}$

Screw Separator



$Q_{\text{max.}} = 38 \text{ cfm}$

Hydrodynamic Screws & Screw Pumps



Up to 33 ft drop Flow rates > 11,650 cfm

Texas Division

1300 Triad Blvd.
Fort Worth, TX - 76131 - USA
Tel +1 817 - 232. 2678
Fax +1 817 - 232. 2676
e-mail: wamtexas@waminc.com
internet: www.waminc.com



Georgia Division

75 Boulderbrook Circle
Lawrenceville, GA 30045 - USA
Tel +1 770 - 339. 6767
Fax +1 770 - 339. 4727
e-mail: wamgeorgia@waminc.com
internet: www.waminc.com



Represented by:

Mayer & Oswald, Inc.

1516 Commerce Dr.

Elgin, IL 60123

800-869-8042

Fax: 847-697-0700

Email: Sales@mayerandoswald.com

www.mayerandoswald.com



www.waminc.com



WAM. 0000 US - February 2011 Right reserved to modify technical specifications

concept: WAMGROUP® Communications Centre