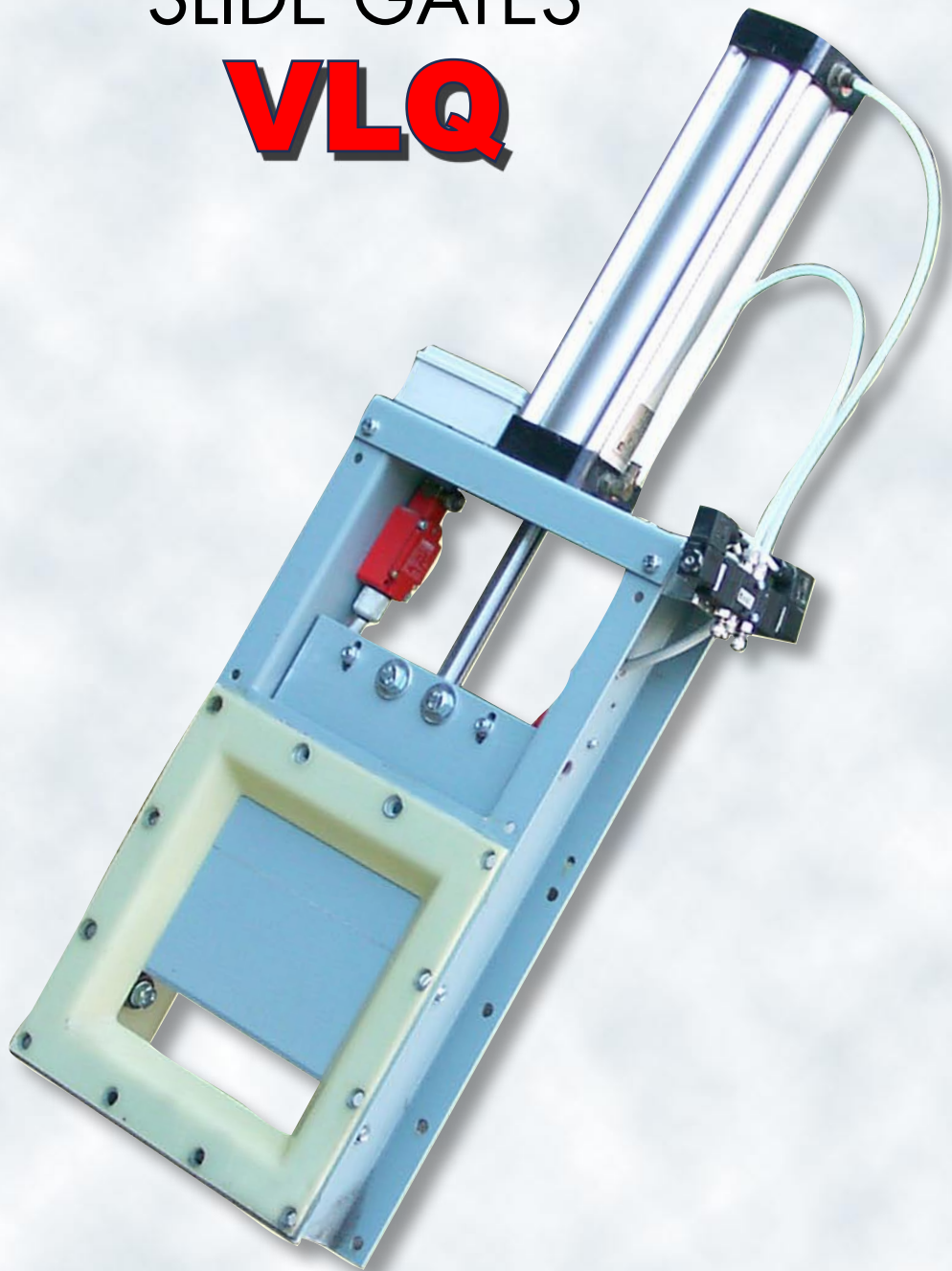




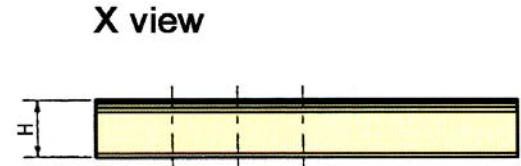
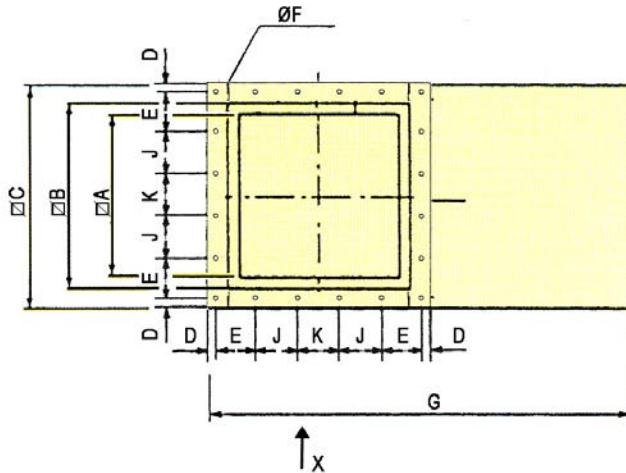
WAM[®] Inc.



SLIDE GATES **VLQ**

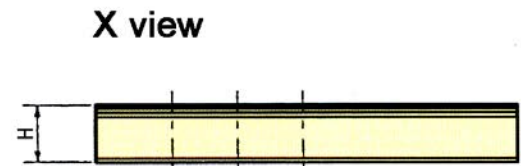
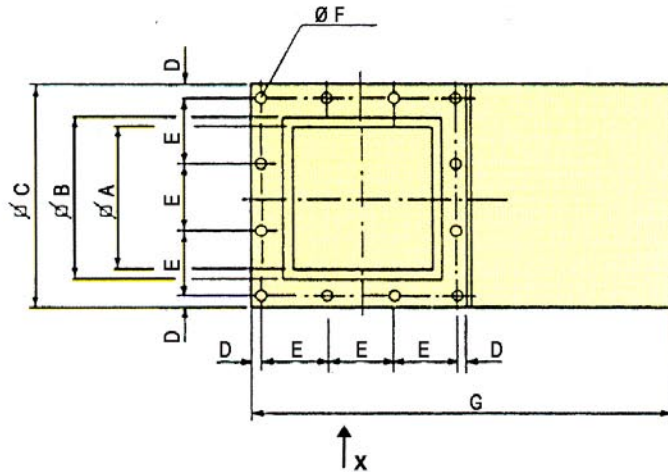


CEMA STANDARD



| TYPE | NOMINAL SIZE | A | B | C | D | E | J | K | Bolts, dia | G | H | Lb |
|---------|--------------|---------|---------|---------|------|----------|--------|---------|------------|---------|--------|-----|
| VLQ0150 | 6 | 4-3/4" | 6-7/8" | 10-1/4" | 5/8" | 2-13/16" | - | 3" | 3/8 | 18" | 4-1/2" | 31 |
| VLQ0250 | 9, 10 | 8-5/8" | 10-7/8" | 14-1/4" | 5/8" | 4-21/64" | - | 4-5/16" | 3/8 | 25-1/2" | 4-1/2" | 49 |
| VLQ0300 | 12 | 10-5/8" | 12-3/4" | 17" | 3/4" | 5-1/8" | - | 5-1/4" | 3/8 | 30-1/8" | 4-1/2" | 67 |
| VLQ0350 | 14 | 12-5/8" | 14-3/4" | 19" | 3/4" | 3-1/2" | 3-1/2" | 3-1/2" | 3/8 | 35-1/2" | 5" | 89 |
| VLQ0400 | 16 | 14-5/8" | 16-3/4" | 20-7/8" | 3/4" | 3-3/4" | 4" | 4" | 3/8 | 39-3/8" | 5" | 102 |

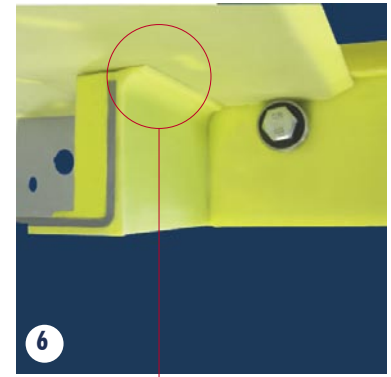
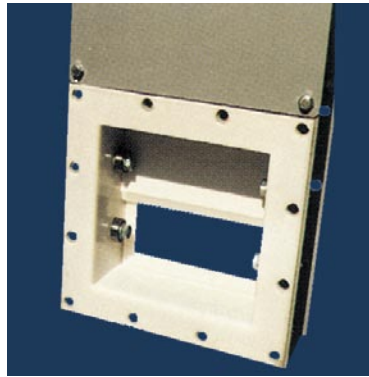
EURO STANDARD



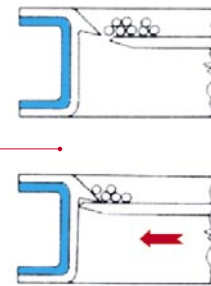
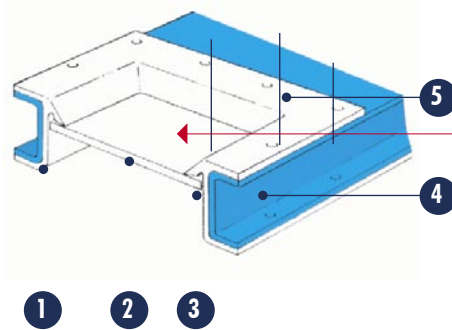
| TYPE | NOMINAL SIZE | A | B | C | D | E | N° E | Dia F | Bolts, dia | G | H | Lb |
|---------|--------------|---------|---------|---------|------|----------|------|-------|------------|---------|--------|-----|
| VLQ0150 | 6 | 4-3/4" | 6-7/8" | 10-1/4" | 5/8" | 4-1/2" | 2 | 1/2" | 3/8 | 18" | 4-1/2" | 31 |
| VLQ0200 | 8 | 6-5/8" | 8-7/8" | 12-1/4" | 5/8" | 3-11/16" | 3 | 1/2" | 3/8 | 21-7/8" | 4-1/2" | 40 |
| VLQ0250 | 10 | 8-5/8" | 10-7/8" | 14-1/4" | 5/8" | 4-5/16" | 3 | 1/2" | 3/8 | 25-1/2" | 4-1/2" | 49 |
| VLQ0300 | 12 | 10-5/8" | 12-3/4" | 17" | 7/8" | 5-1/16" | 3 | 1/2" | 3/8 | 30-1/8" | 4-1/2" | 67 |
| VLQ0350 | 14 | 12-5/8" | 14-3/4" | 19" | 3/4" | 3-1/2" | 5 | 1/2" | 3/8 | 35-1/2" | 5" | 89 |
| VLQ0400 | 16 | 14-5/8" | 16-3/4" | 20-7/8" | 5/8" | 3-15/16" | 5 | 1/2" | 3/8 | 39-3/8" | 5" | 102 |

COMPONENTS

- ① Valve body coated with SINT[®]MC or SINT[®]AL (food-grade) to avoid contact between product and body.
- ② Heavy-duty blade (SINT[®]MC / SINT[®]AL, carbon steel, 304 st.st.)
- ③ Minimum friction contact
- ④ No additional lateral seals required
- ⑤ Dry food quality with SINT[®]AL coating
- ⑥ Dustproof (scraper included)



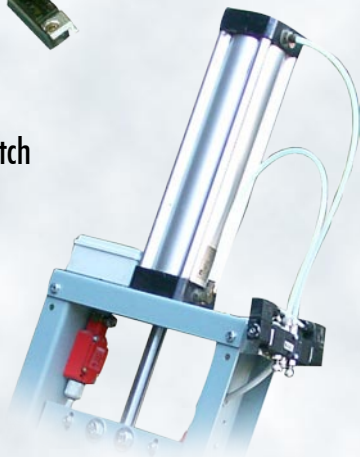
VLQ - VLR - VLS



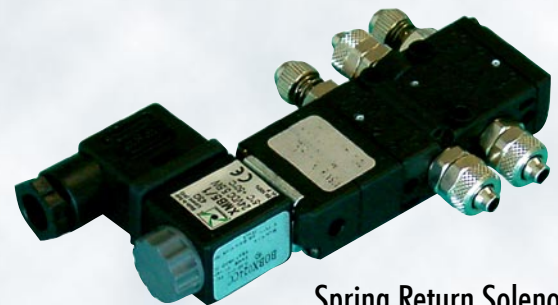
GATE ACTUATORS



Reed Limit Switch
KXM 00



Pneumatic Cylinder
CPL

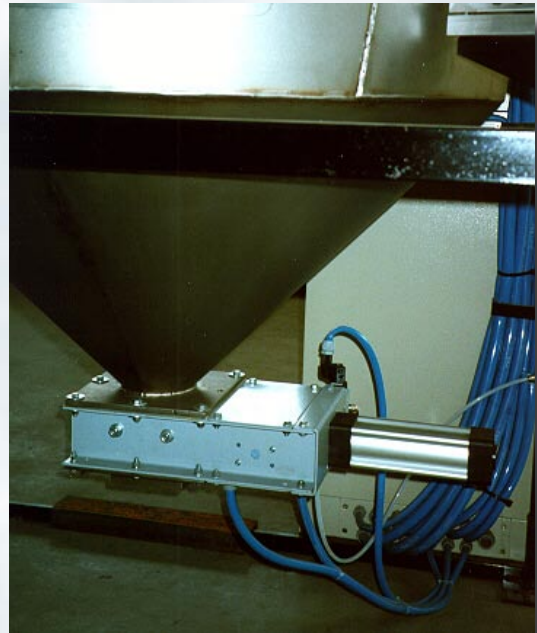


Spring Return Solenoid
V5



Handwheel
CMG

APPLICATIONS



N.B.: Rights reserved to modify technical specifications.

WAM.US.03021 08.05



WAM Inc. Texas Division
1300 Triad Blvd.
Fort Worth, TX 76131 - USA
☎ (817) 232 - 2678
Fax (817) 232 - 2676
E-mail wamtexas@waminc.com
Internet www.waminc.com

Represented by: MAYER & OSWALD, INC.
1516 Commerce Dr.
Elgin, IL 60123 - USA
☎ (800) 869 - 8042
Fax (847) 697 - 0700
E-mail sales@mayerandoswald.com
Internet www.mayerandoswald.com

